

Test Report

Report No. RLSHB000035720004 Page 1 of 4
Applicant SART FUSE CO.,LTD.NANJING SART SCIENCE&TECHNOLOGY DEVELOPMENT CO.,LTD
Address MAQUN SCIENCE&TECHNOLOGY PARK,QINGMA ROAD 6#,NANJING,CHINA

Report on the submitted sample(s) said to be

Sample Name SMD FUSE
 Sample Description Electronic Components mix tested
 Part No. Black end
 Sample Received Date Feb. 6, 2009
 Testing Period Feb. 6, 2009 to Feb. 10, 2009

Test Requested As specified by client, to determine the Lead(Pb), Cadmium(Cd), Mercury(Hg), Hexavalent Chromium (Cr(VI)), Polybrominated Biphenyls (PBBs), Polybrominated Diphenyl Ethers (PBDEs) content in the submitted sample.

Test Method

Test Item(s)	Pretreatment Method	Measured Equipment(s)	Report Limit
Lead(Pb)	IEC 62321:2008 Ed.1 Sec.10	ICP-OES	2mg/kg
Cadmium(Cd)	IEC 62321:2008 Ed.1 Sec.10	ICP-OES	2mg/kg
Mercury(Hg)	IEC 62321:2008 Ed.1 Sec.7	ICP-OES	2mg/kg
Hexavalent Chromium (Cr(VI))	IEC 62321:2008 Ed.1 Annex C	UV-Vis	2mg/kg
Polybrominated Biphenyls (PBBs)	IEC 62321:2008 Ed.1 Annex A	GC-MS	5mg/kg
Polybrominated Diphenyl Ethers (PBDEs)	IEC 62321:2008 Ed.1 Annex A	GC-MS	5mg/kg

Test Result(s) Please refer to the following page(s).

Tested by

Chen Jijuan

Inspected by

Zhang Yijun

Approved by

Chen Jijuan

Date

Feb. 10, 2009

Technical Manager

No. 31341519

Test Report

Report No. RLSHB000035720004

Page 2 of 4

Test Result(s)

Test Item(s)	Content
Lead(Pb)	N.D.
Cadmium (Cd)	N.D.
Mercury(Hg)	N.D.
Hexavalent Chromium (Cr(VI))	N.D.

Test Item(s)	Content
Polybrominated Biphenyls (PBBs)	
Monobromobiphenyl	N.D.
Dibromobiphenyl	N.D.
Tribromobiphenyl	N.D.
Tetrabromobiphenyl	N.D.
Pentabromobiphenyl	N.D.
Hexabromobiphenyl	N.D.
Heptabromobiphenyl	N.D.
Octabromobiphenyl	N.D.
Nonabromobiphenyl	N.D.
Decabromobiphenyl	N.D.

Test Item(s)	Content
Polybrominated Diphenyl Ethers (PBDEs)	
Monobromodiphenyl ether	N.D.
Dibromodiphenyl ether	N.D.
Tribromodiphenyl ether	N.D.
Tetrabromodiphenyl ether	N.D.
Pentabromodiphenyl ether	N.D.
Hexabromodiphenyl ether	N.D.
Heptabromodiphenyl ether	N.D.
Octabromodiphenyl ether	N.D.
Nonabromodiphenyl ether	N.D.
Decabromodiphenyl ether	N.D.

Note: -N.D. = Not Detected (<Report Limit)
 -mg/kg = ppm = parts per million

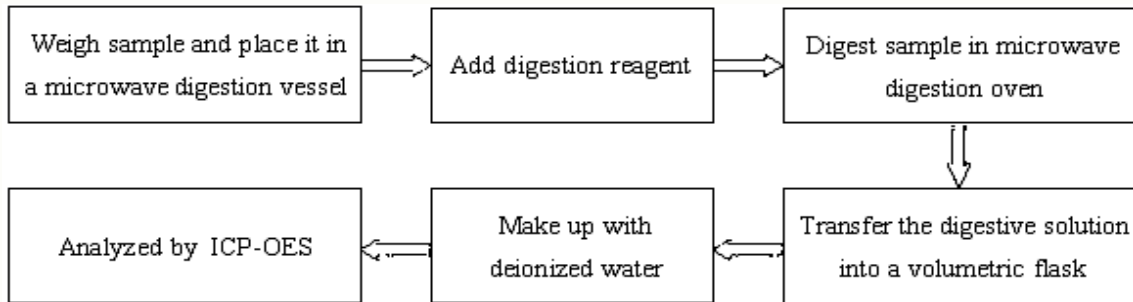
Test Report

Report No. RLSHB000035720004

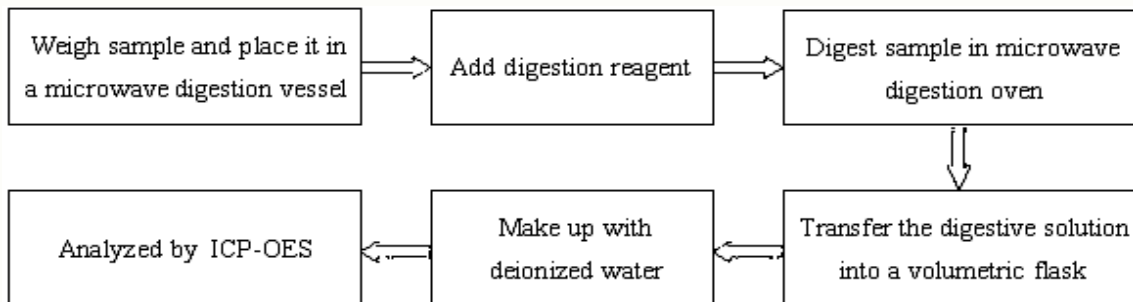
Page 3 of 4

Test Process

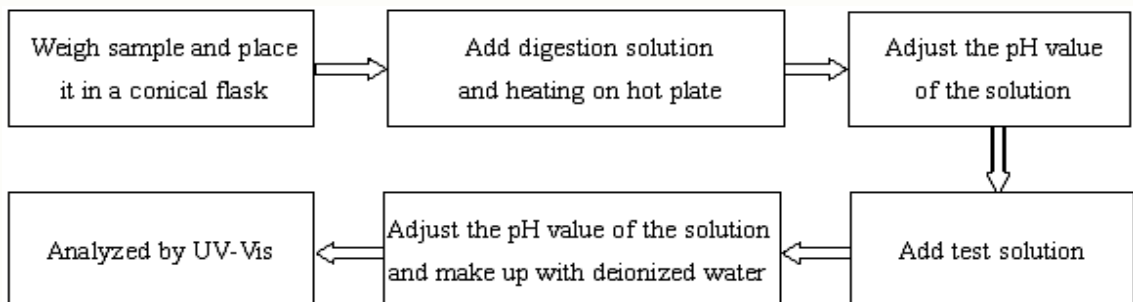
1. Lead(Pb), Cadmium(Cd)



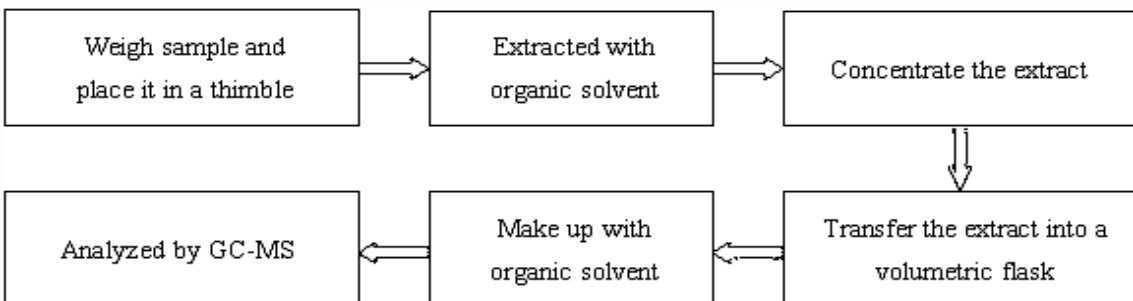
2. Mercury(Hg)



3. Hexavalent Chromium (Cr(VI))



4. Polybrominated Biphenyls (PBBs), Polybrominated Diphenyl Ethers (PBDEs)

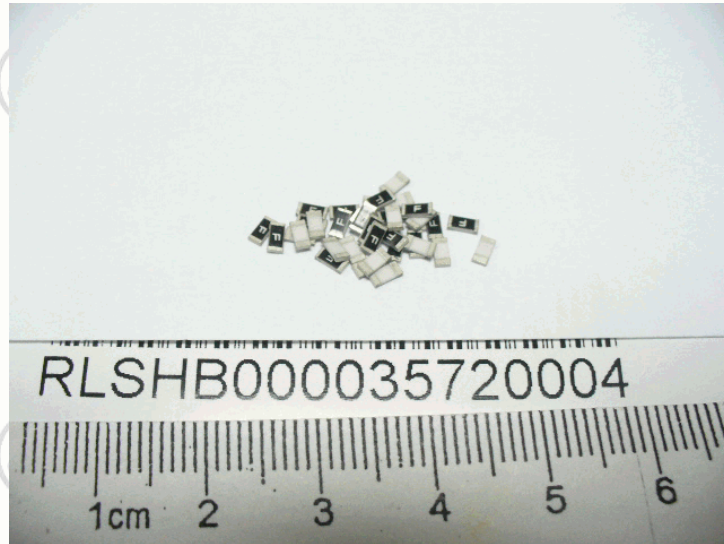


Test Report

Report No. RLSHB000035720004

Page 4 of 4

Photo(s) of the sample(s)



*** End of report ***

This report is considered invalidated without the Special Seal for Inspection of the CTI. This report shall not be altered, increased or deleted. The results shown in this test report refer only to the sample(s) tested. Without written approval of CTI, this test report shall not be copied except in full and published as advertisement.

4F., Building 15-3, 999 Ningqiao Road, Jinqiao, Pudong, Shanghai