

# Test Report



Report No. A2230515740101002

Company Name shown on Report NANJING SART SCIENCE & TECHNOLOGY DEVELOPMENT CO.,LTD.

Address MAQUN SCIENCE & TECHNOLOGY PARK,QINGMA ROAD 6#,NANJING, CHINA

The following sample(s) and sample information was/were submitted and identified by/on the behalf of the applicant

Sample Name Black bottm white mark  
Sample Received Date Oct. 9, 2023  
Testing Period Oct. 9, 2023 to Oct. 13, 2023

Test Requested As specified by client, to test Lead (Pb), Cadmium (Cd), Mercury (Hg), Hexavalent Chromium (Cr(VI)), Polybrominated Biphenyls (PBBs), Polybrominated Diphenyl Ethers (PBDEs), Phthalates (DBP, BBP, DEHP, DIBP), Beryllium(Be), Antimony(Sb), Fluorine (F), Chlorine (Cl), Bromine (Br), Iodine (I), Perfluorooctanoic Acid(PFOA), Perfluorooctane Sulfonates(PFOS) in the submitted sample(s).

Test Method Please refer to the following page(s).

Test Result(s) Please refer to the following page(s).

\*\*\*\*\*

### Conclusion

| Tested Sample    | According to standard/directive                        | Result |
|------------------|--|--------|
| Submitted Sample | RoHS Directive 2011/65/EU with amendment (EU) 2015/863 | PASS   |

\*\*\*\*\*

PASS means that the results shown on the report comply with the limits set by RoHS Directive 2011/65/EU with amendment (EU) 2015/863.



*Chen Kaimin*

Chen kaimin  
Lab Manager

Date Oct. 13, 2023

No. R295827771

Centre Testing International Pinbiao(Shanghai) Co., Ltd.

No.1351, Wanfang Road, Minhang District, Shanghai, China

# Test Report

Report No. A2230515740101002

Page 2 of 7

## Test Method

| Test Item(s)                           | Test Method   | Measured Equipment(s) |
|--|---|-----------------------|
| Lead (Pb)                              | IEC 62321-5:2013  | ICP-OES               |
| Cadmium (Cd)                           | IEC 62321-5:2013  | ICP-OES               |
| Mercury (Hg)                           | IEC 62321-4:2013+AMD1:2017 CSV  | ICP-OES               |
| Hexavalent Chromium (Cr(VI))           | IEC 62321-7-2:2017 and/or determination of Total Chromium by IEC 62321-5:2013 | UV-Vis/ICP-OES        |
| Polybrominated Biphenyls (PBBs)        | IEC 62321-6:2015  | GC-MS                 |
| Polybrominated Diphenyl Ethers (PBDEs) | IEC 62321-6:2015  | GC-MS                 |
| Phthalates (DBP, BBP, DEHP, DIBP)      | IEC 62321-8:2017  | GC-MS                 |
| Beryllium(Be)                          | Refer to US EPA 3052:1996 & US EPA 6010D:2018*                                | ICP-OES               |
| Antimony(Sb)                           | Refer to US EPA 3052:1996 & US EPA 6010D:2018*                                | ICP-OES               |
| Fluorine (F)                           | Refer to EN 14582:2016  | IC                    |
| Chlorine (Cl)                          | Refer to EN 14582:2016  | IC                    |
| Bromine (Br)                           | Refer to EN 14582:2016  | IC                    |
| Iodine (I)                             | Refer to EN 14582:2016  | IC                    |
| Perfluorooctanoic Acid(PFOA)           | Refer to US EPA 3550C:2007 & US EPA 8321B:2007*                               | LC-MS-MS/LC-MS        |
| Perfluorooctane Sulfonates(PFOS)       | Refer to US EPA 3550C:2007 & US EPA 8321B:2007*                               | LC-MS-MS/LC-MS        |

# Test Report

Report No. A2230515740101002

Page 3 of 7

**Test Result(s)**

| Tested Item(s)                                | Result | MDL     | Limit      |
|---|--------|---------|------------|
|   | 002    |         |            |
| Lead (Pb)                                     | N.D.   | 2 mg/kg | 1000 mg/kg |
| Cadmium (Cd)                                  | N.D.   | 2 mg/kg | 100 mg/kg  |
| Mercury (Hg)                                  | N.D.   | 2 mg/kg | 1000 mg/kg |
| Hexavalent Chromium (Cr(VI))                  | N.D.   | 8 mg/kg | 1000 mg/kg |
| Tested Item(s)                                | Result | MDL     | Limit      |
|   | 002    |         |            |
| <b>Polybrominated Biphenyls (PBBs)</b>        |        |         |            |
| Monobromobiphenyl                             | N.D.   | 5 mg/kg | 1000 mg/kg |
| Dibromobiphenyl                               | N.D.   | 5 mg/kg |            |
| Tribromobiphenyl                              | N.D.   | 5 mg/kg |            |
| Tetrabromobiphenyl                            | N.D.   | 5 mg/kg |            |
| Pentabromobiphenyl                            | N.D.   | 5 mg/kg |            |
| Hexabromobiphenyl                             | N.D.   | 5 mg/kg |            |
| Heptabromobiphenyl                            | N.D.   | 5 mg/kg |            |
| Octabromobiphenyl                             | N.D.   | 5 mg/kg |            |
| Nonabromobiphenyl                             | N.D.   | 5 mg/kg |            |
| Decabromobiphenyl                             | N.D.   | 5 mg/kg |            |
| Tested Item(s)                                | Result | MDL     | Limit      |
|   | 002    |         |            |
| <b>Polybrominated Diphenyl Ethers (PBDEs)</b> |        |         |            |
| Monobromodiphenyl ether                       | N.D.   | 5 mg/kg | 1000 mg/kg |
| Dibromodiphenyl ether                         | N.D.   | 5 mg/kg |            |
| Tribromodiphenyl ether                        | N.D.   | 5 mg/kg |            |
| Tetrabromodiphenyl ether                      | N.D.   | 5 mg/kg |            |
| Pentabromodiphenyl ether                      | N.D.   | 5 mg/kg |            |
| Hexabromodiphenyl ether                       | N.D.   | 5 mg/kg |            |
| Heptabromodiphenyl ether                      | N.D.   | 5 mg/kg |            |
| Octabromodiphenyl ether                       | N.D.   | 5 mg/kg |            |
| Nonabromodiphenyl ether                       | N.D.   | 5 mg/kg |            |
| Decabromodiphenyl ether                       | N.D.   | 5 mg/kg |            |

# Test Report

Report No. A2230515740101002

Page 4 of 7

**Test Result(s)**

| Tested Item(s)                                      | Result | MDL         | Limit      |
|---|--------|-------------|------------|
|   | 002    |             |            |
| <b>Phthalates (DBP, BBP, DEHP, DIBP)</b>            |        |             |            |
| Dibutyl phthalate (DBP)<br>CAS#:84-74-2             | N.D.   | 50 mg/kg    | 1000 mg/kg |
| Butyl benzyl phthalate (BBP)<br>CAS#:85-68-7        | N.D.   | 50 mg/kg    | 1000 mg/kg |
| Di-(2-ethylhexyl) phthalate (DEHP)<br>CAS#:117-81-7 | N.D.   | 50 mg/kg    | 1000 mg/kg |
| Diisobutyl phthalate (DIBP)<br>CAS#:84-69-5         | N.D.   | 50 mg/kg    | 1000 mg/kg |
| Tested Item(s)                                      | Result | MDL         |            |
|   | 002    |             |            |
| Beryllium (Be)                                      | N.D.   | 10 mg/kg    |            |
| Antimony (Sb)                                       | N.D.   | 10 mg/kg    |            |
| Tested Item(s)                                      | Result | MDL         |            |
|   | 002    |             |            |
| Fluorine (F)  | N.D.   | 10 mg/kg    |            |
| Chlorine (Cl)                                       | N.D.   | 10 mg/kg    |            |
| Bromine (Br)  | N.D.   | 10 mg/kg    |            |
| Iodine (I)  | N.D.   | 10 mg/kg    |            |
| Tested Item(s)                                      | Result | MDL         |            |
|   | 002    |             |            |
| Perfluorooctanoic Acid (PFOA)                       | N.D.   | 0.010 mg/kg |            |
| Tested Item(s)                                      | Result | MDL         |            |
|   | 002    |             |            |
| Perfluorooctane Sulfonates (PFOS)                   | N.D.   | 0.010 mg/kg |            |

**Sample/Part Description**

| No. | CTI Sample ID | Description                              |
|-----|---------------|--|
| 1   | 002           | Electronic components(Tested as a whole) |

**Remark:** The sample(s) had been dissolved totally tested for Lead, Cadmium, Mercury, Beryllium, Antimony. The sample(s) was tested as a whole, because it's impossible to disassemble or separate it by current equipment and technology. The result(s) shown on this report may be different from the content of any homogeneous material.

- MDL = Method Detection Limit
- N.D. = Not Detected (<MDL )
- mg/kg = ppm = parts per million
- 1000 mg/kg = 0.1%

**Note:** “\*” indicates the method(s) is (are) not in CNAS accreditation scope.

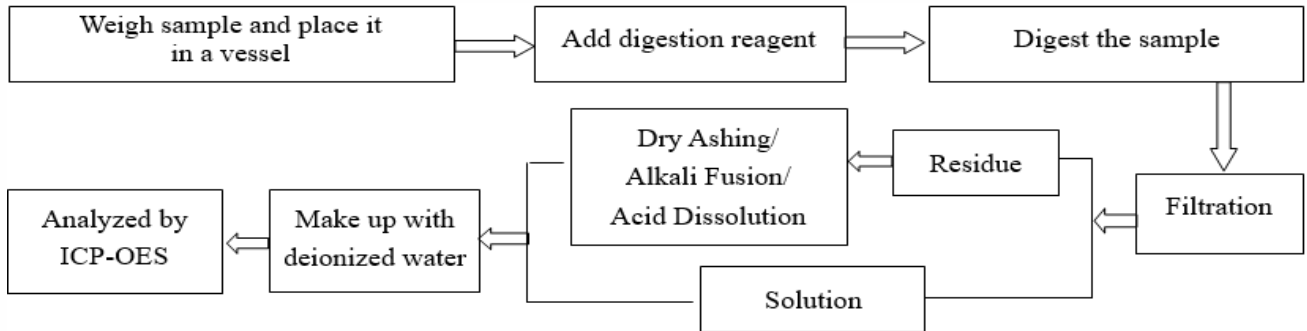
# Test Report

Report No. A2230515740101002

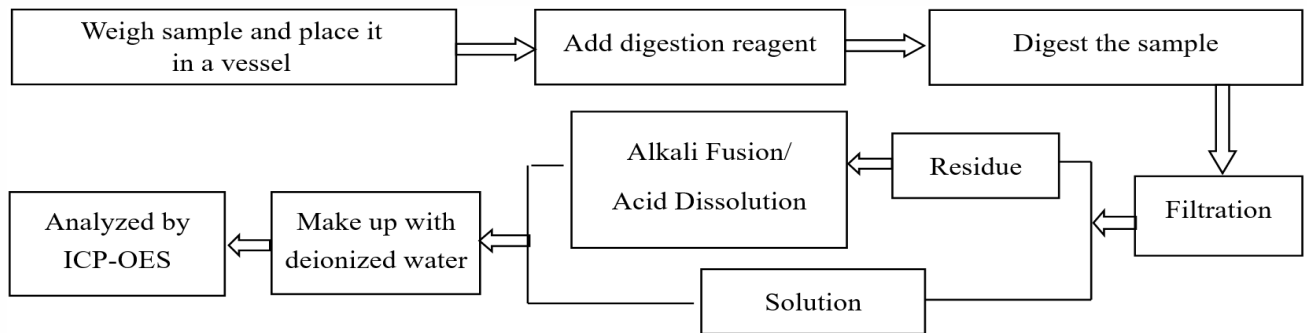
Page 5 of 7

## Test Process

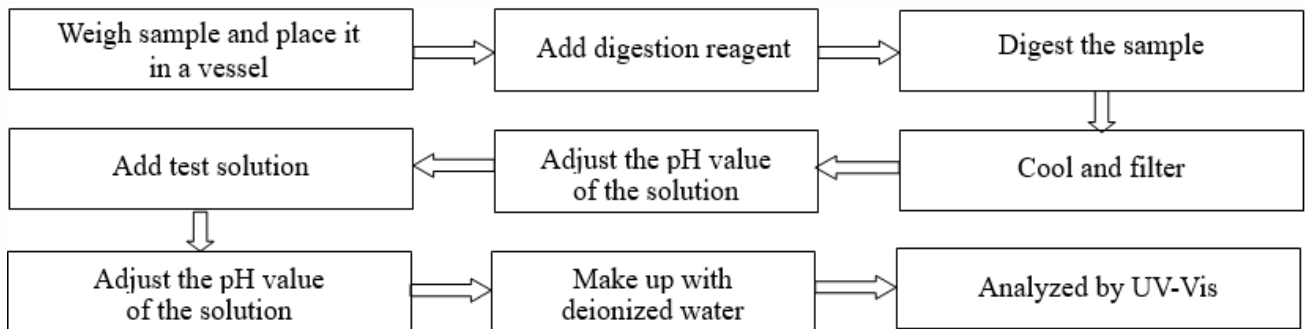
### 1. Lead (Pb), Cadmium (Cd), Chromium (Cr)



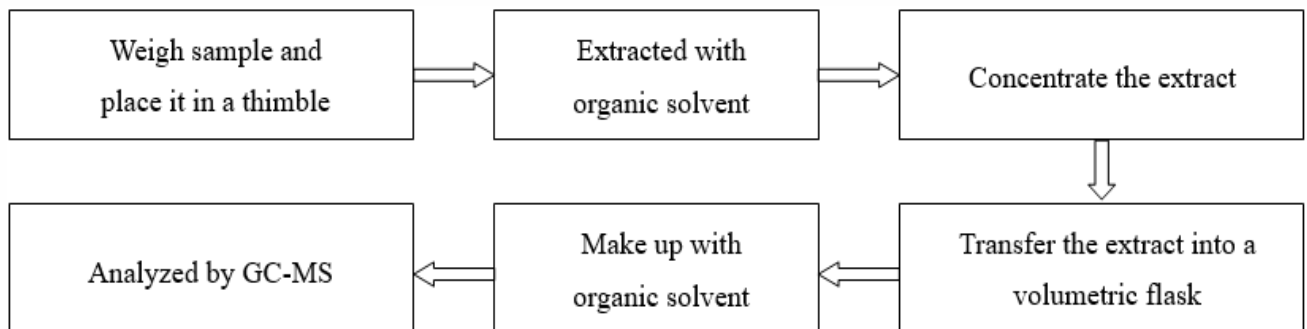
### 2. Mercury (Hg)



### 3. Hexavalent Chromium (Cr(VI))



### 4. Polybrominated Biphenyls (PBBs), Polybrominated Diphenyl Ethers (PBDEs)

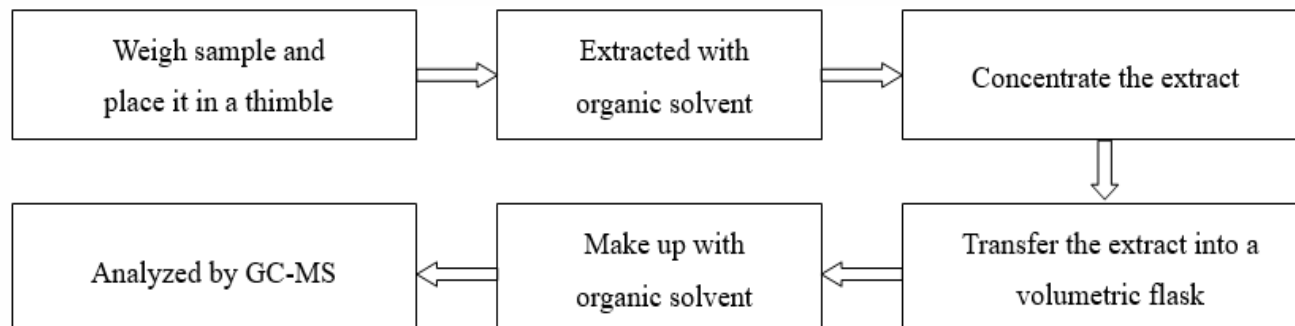


# Test Report

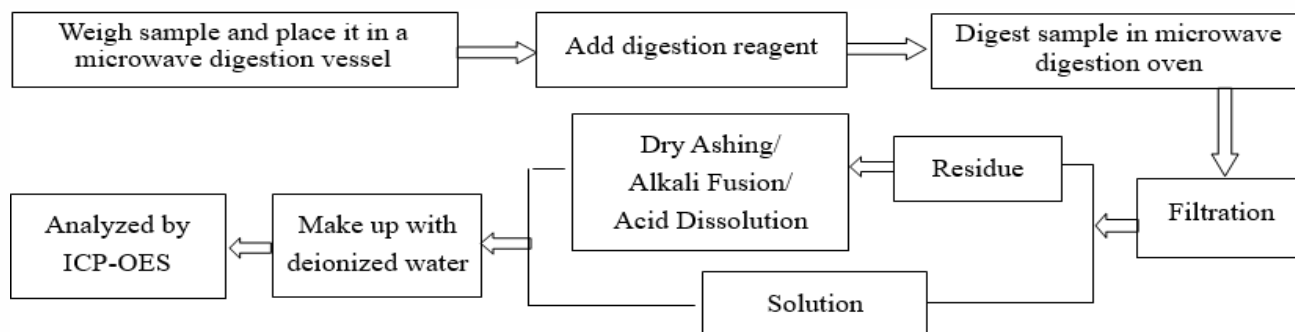
Report No. A2230515740101002

Page 6 of 7

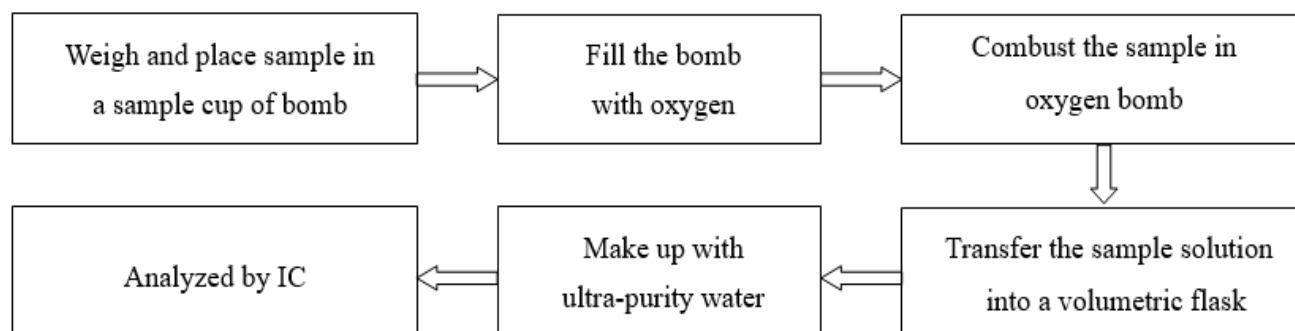
## 5. Phthalates (DBP, BBP, DEHP, DIBP)



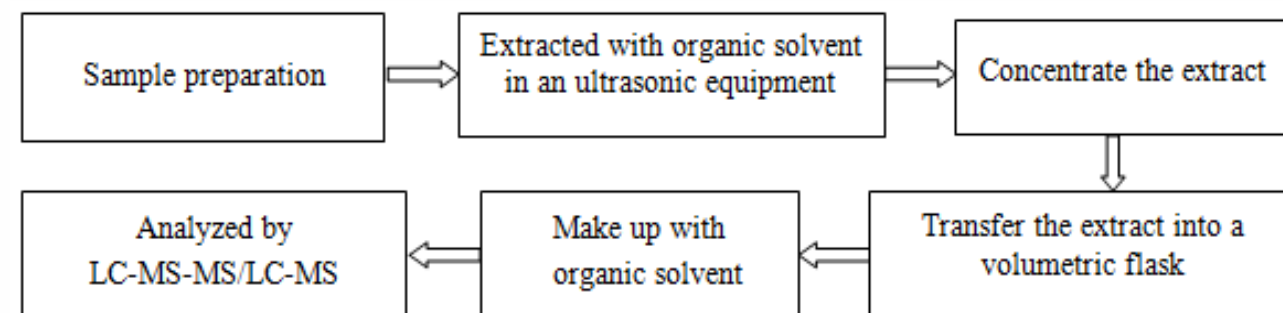
## 6. Beryllium(Be), Antimony(Sb)



## 7. Fluorine (F), Chlorine (Cl), Bromine (Br), Iodine (I)



## 8. Perfluorooctanoic Acid(PFOA), Perfluorooctane Sulfonates(PFOS)

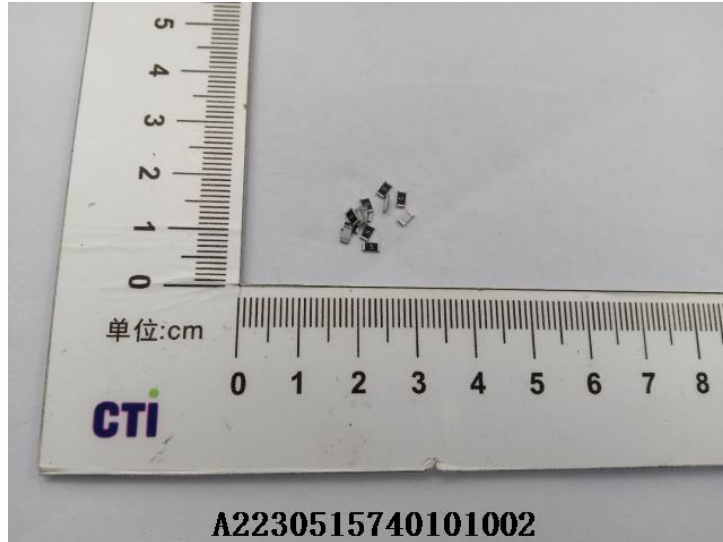


# Test Report

Report No. A2230515740101002

Page 7 of 7

## Photo(s) of the sample(s)



### Statement:

1. This report is considered invalid without approved signature, special seal and the seal on the perforation;
2. The Company Name shown on Report and Address, the sample(s) and sample information was/were provided by the applicant who should be responsible for the authenticity which CTI hasn't verified;
3. The result(s) shown in this report refer(s) only to the sample(s) tested;
4. Without written approval of CTI, this report can't be reproduced except in full;
5. In case of any discrepancy between the English version and Chinese version of the testing reports (if generated), the Chinese version shall prevail.

\*\*\* End of report \*\*\*